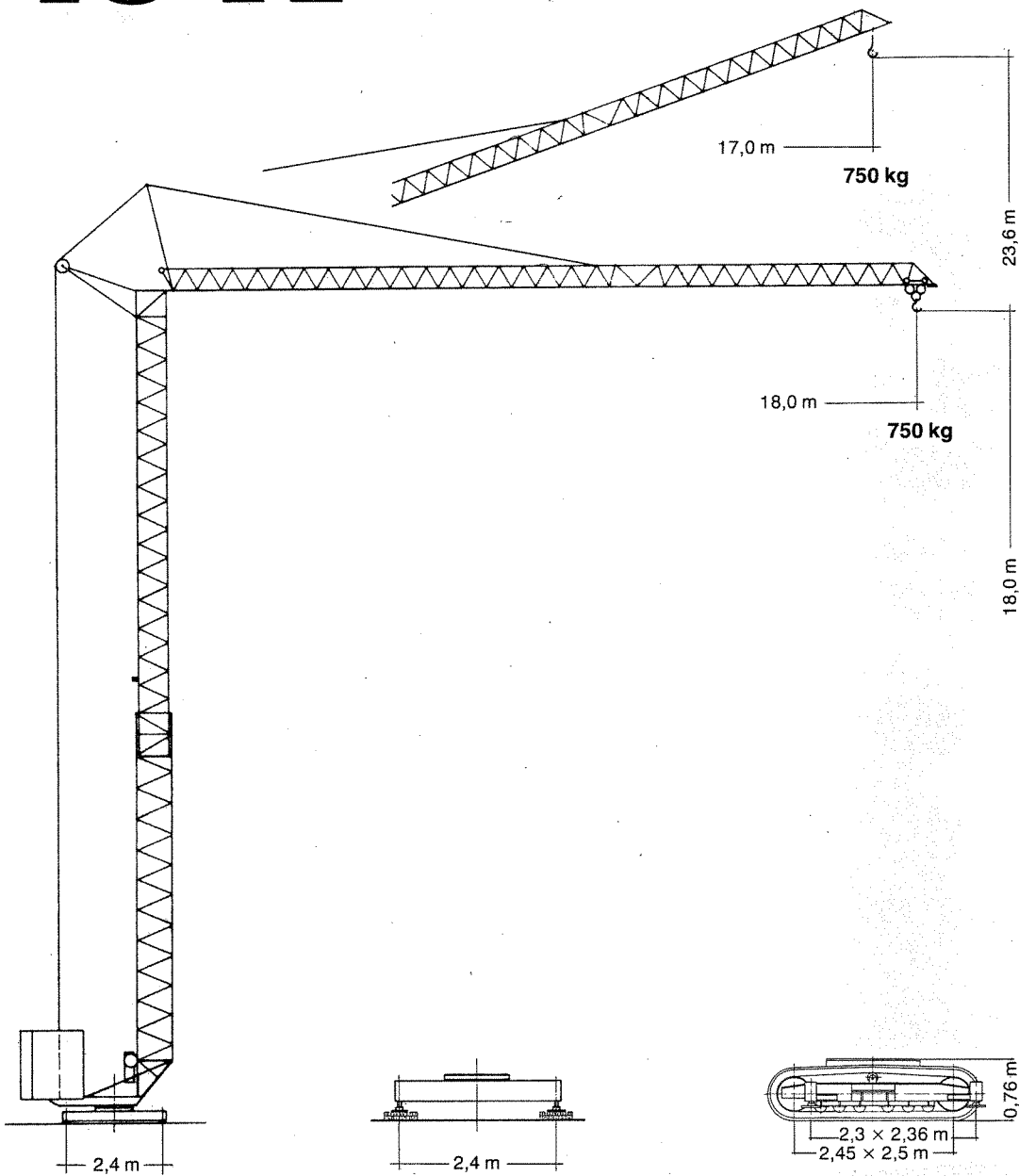
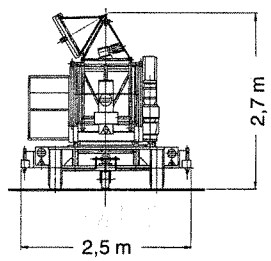
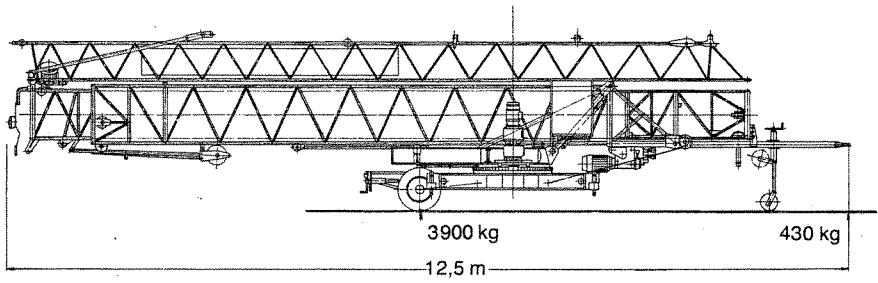
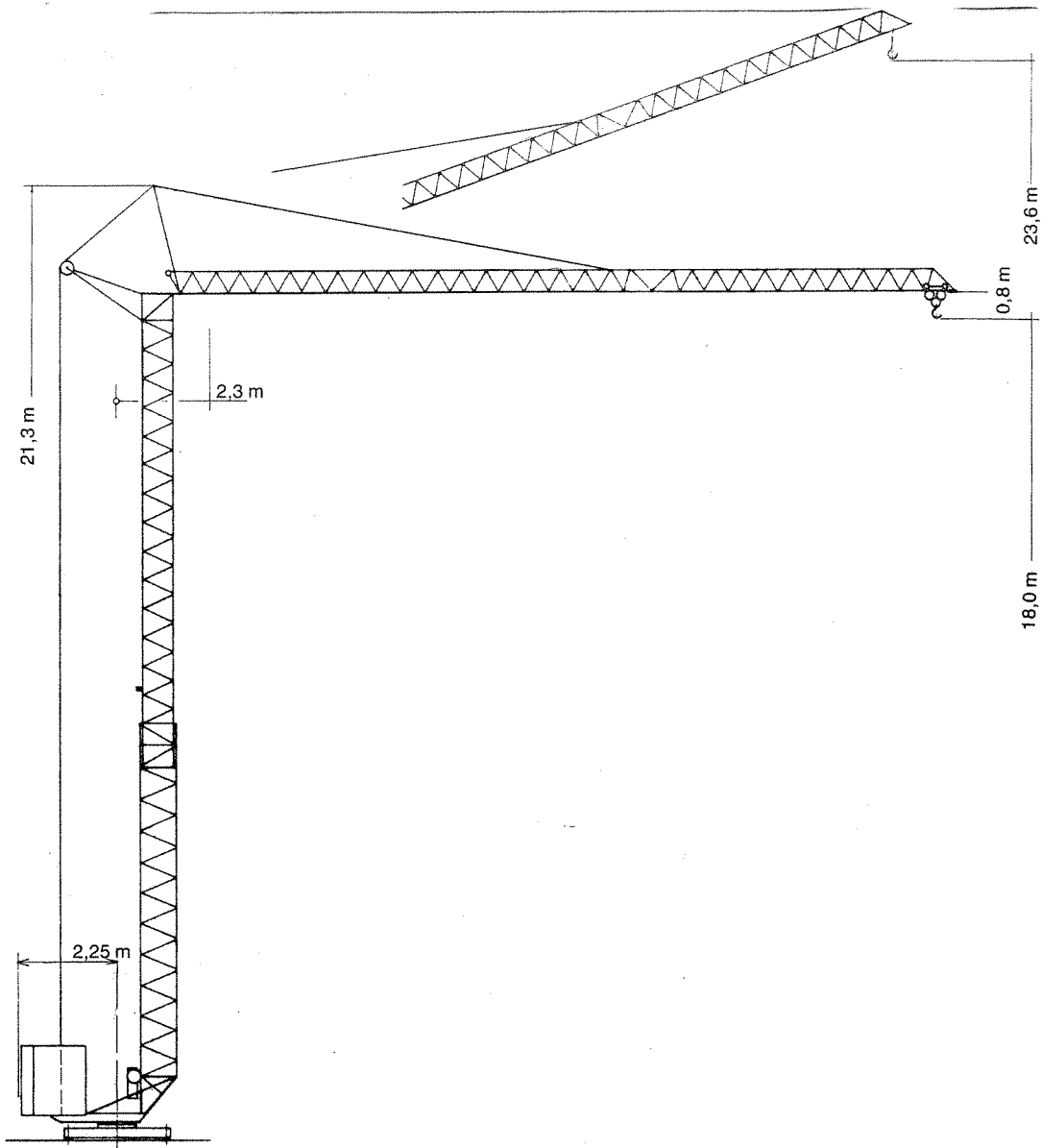


**Tower Crane
Grue à tour**

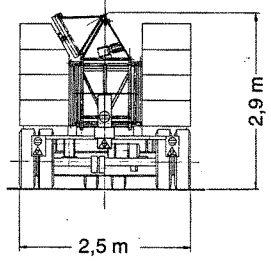
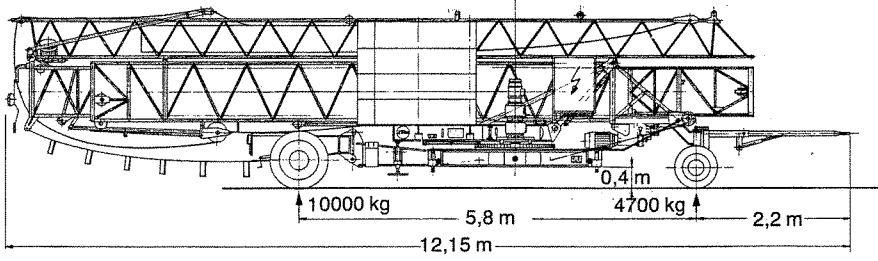
Turmdrehkran 13 K



LIEBHERR



Transportgewicht 4250 kg
Transport weight
Poids de transport



Transportgewicht 14700 kg
Transport weight
Poids de transport

13 K

Gewicht

Weight

Poids

Max. Eckkraft in Betrieb Max. corner pressure in operation Réaction max. par angle en service	82,5 kN
Zentralballast ca. (nur in Österreich) Central ballast approx. (only in Austria) Lest-fixe de chassis env. (seulement en Autriche)	600 kg

1 kN ≈ 100 kp

Gegengewicht ca. Counter weight approx. Contrepoids env.	8800 kg
Konstruktionsgewicht Dead weight Poids de la construction	3900 kg

Ausladung und Tragfähigkeit

Radius and capacity

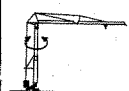
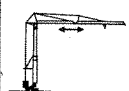
Portée et charge

Auslegerlänge Length of jib Longueur de flèche	Max. Tragfähigkeit Max. capacity Charge max.	Ausladung und Tragfähigkeit m/kg Radius and capacity Portée et charge						
		12,0	13,0	14,0	15,0	16,0	17,0	18,0
m	m/kg							
18,0	2,3 – 11,7 1250	1220	1110	1010	930	860	800	750

Geschwindigkeiten

Speeds

Vitesses

	U/min 1,0 sl./min tr./mn	1,1 kW
	25,0 m/min	0,75 kW

Hubwerk Hoist gear Mécanisme de levage	Gang Gear Boite	kg	m/min
5,1 kW	1	1250	10,0
	2	750	30,0

Kabelquerschnitt bei 380 V
Cross section of cable
Section of câble

Betriebsspannung 380 V
Operating voltage
Tension de service

bis 30 m
up to
jusqu'à

Frequenz 50 Hz
Frequency
Fréquence

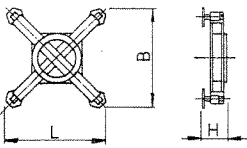
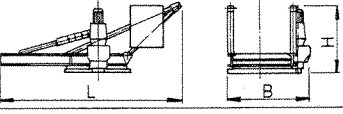
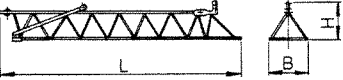
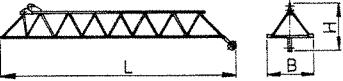
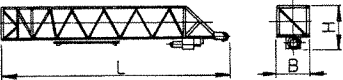
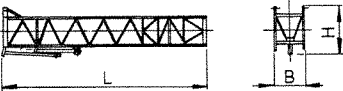
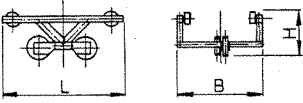

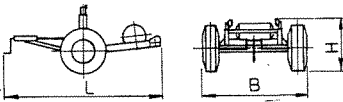
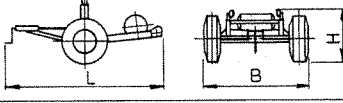
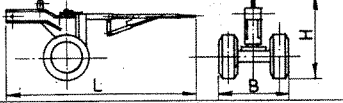
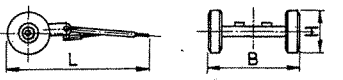
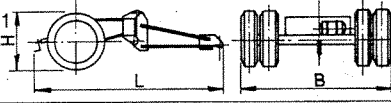
Gesamtmotorenleistung 7,0 kW
Total motor output
Puissance totale des moteurs

Technische Daten - Technical data

Caractéristiques techniques

Kolli-Liste

Packing List Liste de colisage

Pos. Item Rep.	Anzahl Quantity Qté	Benennung Description Désignation		Länge m Length m Longueur m	Breite m Width m Largeur m	Höhe m Height m Hauteur m	Gewicht kg Weight kg Poids kg
1	1	Unterwagen kompl. Undercarriage compl. Chassis compl.		2,65	2,65	0,30	800
2	1	Drehbühne kompl. Revolving platform compl. Plate-forme tournante complète		3,30	1,35	1,30	1000
3	1	Ausleger-Anlenkstück Jib pivoting section Élément de pied de flèche		13,60	0,78	0,74	340
4	1	Ausleger-Kopfstück Jib head piece Pointe de flèche		6,82	0,80	0,94	130
5	1	Turm-Unterteil Tower (lower part) Tour inférieure		8,92	0,98	1,34	600
6	1	Turm-Oberteil Tower (upper part) Tour supérieure		10,67	0,75	1,11	565
7	1	Laufkatze kompl. Trolley compl. Chariot distributeur compl.		0,95	0,72	0,36	30
8	1	Zugdeichsel Drowbar Barre de fraction		2,55	0,26	0,60	95
9	1	Transportachse hinten ungebremst Road transport axle behind not braked Essieux de transport arrière non freiné		1,25	1,70	0,70	172
10	1	Transportachse hinten gebremst Road transport axle behind braked Essieux de transport arrière freiné		1,80	1,70	0,70	257
11	1	Transportachse vorne Tra 50 KW Road transport axle front Essieux de transport avant		2,90	0,70	1,10	480
12	1	Transportachse vorne UL 6 Road transport axle front Essieux de transport avant		2,30	2,10	1,00	720
13	1	Transportachse hinten mit Adapter Tra 120 GY 1, Tra 140 GY 1 Road transport axle behind with adapter Essieux de transport arrière avec adaptateur		3,85	2,50	1,05	1450
14	1	Kiste mit Seilen und Kleinteilen Case with ropes and small parts Caisse avec câbles et pièces détachées		1,00	0,80	0,80	500

Datenblatt Nr. 120 P - 1922 - DIN 15018 und OENORM T 3 - 3. 80
Data sheet
Feuille de caractéristiques

Konstruktionsänderungen vorbehalten!
Subject to alterations!
Sous réserves de modifications!

Printed in Fed. Rep. of Germany

**Nehmen Sie Kontakt auf mit
Contact**

**Mettez-vous en rapport avec
LIEBHERR-WERK BIBERACH GMBH, Postfach 1663, D-7950 Biberach an der Riss 1,
Telefon (0735 1) 41-0. Telex 7 1802**